

Holistic Energy Check-up with the
Biopulsar-Reflexograph®

Aura Chakra Biofeedback



Holistic Life Consultation

Aura Consultation

This could point to a prolonged and continuous resentment, with which the organ could not cope physically. Unconsciously and persistently it holds on to bad feelings. Physically it expresses itself often in a warm, damp and energy weakened condition of the organ.

Yellow

With yellow one can feel a little unwell, but not sick. The reason for this slight energy blockage can be often linked to over-thinking and too much contemplation. One has the impression that not everything goes like one wishes instead of how it complies with one's inner spirit. Thus, one seeks a solution, but cannot find it. One feels at a standstill. It is like sticky, wet mucus that is preventing one to go forward in life. On the physical level mucus sicknesses often manifest.

Green

Through green a balanced relationship between activity and rest prevails. Green is the colour of harmony and peace. One feels well and feels a certain easiness and lightness of being. The organ zone works in consistent harmony with the other organs.

Turquoise/Light Blue

The interpretation for these colours is similar to green. The life energy flow is balanced. One has stable and healthy regulation abilities, and is very sensitive to outer and inner stimuli. One has distinct harmony and feels the beauty in everything. Also is very empathic and sensitive to the slightest astral vibrations.

Blue/Indigo

If outer stress, shortage of time, and inner emotional pressure rises, then the Yang-energy of the organ zones rises also. One wants to keep up with the demands of life and increases one's work performance. Then the body tissue accumulates energy and air, which leads to tenseness and eventually to over-acidity. These conditions are mostly temporary and acute. One feels most efficient and sometimes slightly overtaxed, because one wants to meet all demands.

Violet/Magenta

Magenta arises from the complementary colours of red and blue. These oppositions create friction heat, which in one way leads to higher creativity and intuition, but in another way to nervousness

and tension. If the pressures of life increase, then there will be a build-up of life energy in the organ zone. In the area of the head this can be expressed through higher creativity and intuition. On the physical level this can lead to localized heat processes, e.g. higher body temperature and inflammation. The magenta colour is hot, prickly and stimulating.

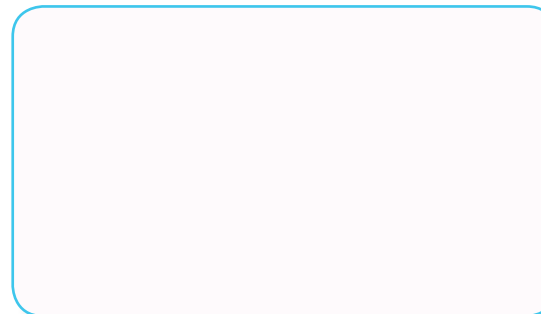
White

White is on the outer pole of the visible light and is far away from the harmonic middle of green. White in the area of the brain indicates good brain activities and thought programmes. In the area of the body organ zones white indicates that the energy is pent-up and cannot flow any further. This can lead to a function restriction of the organ. The reason for this could be stress and a barely processed physical or psychical burden, which can lead to an energetic collapse. It is advisable to seek the help of a qualified practitioner.

Grey

After the collapse of the organ, either through a highly dramatic conflicting situation or through chronic exploitation of the life energy, e.g. through the non-attention of prolonged, smoldering conflicts, the organ swings finally into grey. The organ has fallen into a deep depression, it is sad and without hope. The life energy has dried up, that is also why the skin on the reflex zones is cool, dry and rough. To seek the advice of a qualified practitioner is highly recommended.

This information has been offered to you by:



The Reflex Zone Biofeedback

The word "biofeedback" is a description for biological control mechanisms. It is composed from the Greek word "bio" = life, life processes and the English word "feedback" = reaction.

Reflex Zones or "somatotopies" (from the Greek words "soma" = body; and "topos" = place, position, location) are areas on the skin surface, which have connections to the internal organs and body structures.

The interpretation of the energetic condition of a reflex zone serves as a method of diagnosis and treatment for regulating the internal organs and the psyche.



The Biopulsar-Reflexograph®

The Biopulsar-Reflexograph® Biofeedback System is a modern, multifunctional diagnostic device for the PC, based on the biofeedback of the hand reflex zones. Within a few minutes a complete bioenergetic analysis of 43 organ zones is generated.

Through a Biopulsar's reflex zone biofeedback scan profound knowledge can be obtained about the bioenergetic field (aura), the life force condition of individual organ zones and organ networks, potentials, causes of field disturbances and paraesthesia.

In the modern therapy practice the reflex zone biofeedback can be used for individual product and remedy testing, allergy and compatibility testing, control measuring, holistic aura and life counselling and preventative medicine.

The Functionality of the Device

The Biopulsar-Reflexograph® Biofeedback System is a highly sensitive, CE-labelled biomedical measuring device, developed in accordance with the basic safety requirements of the European Guidelines. The Biopulsar is based on modern high-tech computer technology combined with the fundamental principles of ancient healing sciences.

• The concept of the Biopulsar-Reflexograph® Biofeedback System is based on Eastern and Western holistic philosophies and medical sciences.

The presentation of the energy system of the human body can be seen in different ways, e.g. through the live biofeedback of the organ reflex zones in real-time, the dynamical whole body aura, the colour vibrational frequency of the organ zones, the activity of the chakras and much more.

• The Biopulsar-Reflexograph® Hand Sensor is a receiver for high resolution, bio-medical signals which are taken from the palm's reflex zones.

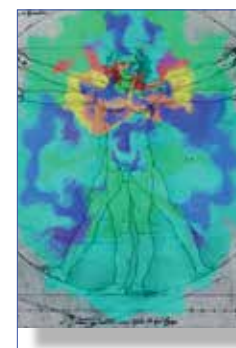
Every 500 milliseconds (real-time) bio-data of 43 organ zones are measured and transferred to the PC. Through the Biopulsar's various software programmes the data is processed and presented in different graphic representations.

Thyroid
Neck
Shoulder
Arm Pit
Upper Arm
Esophagus
Lung
Heart
Thymus Gland
Stomach

The Vitality Check-Up

Organ zones react very intelligently to conscious and unconscious thoughts, feelings and emotional information. The interaction of body and psyche is being expressed through the aura in dynamic colours. By means of a dynamic full body aura measuring the skilled life counsellor can quickly recognize the total corporeal and psychic constitution, the fine substantial energy relation, tensions, potentials and blockages.

An energy examination is an important basis for a holistic health provision.



The Ideal Energy Condition



When people show high frequency colours like royal blue, magenta or white over their head (in their brain measurings), it means that they have a lot of energy for positive thoughts and good consciousness programmes. Lower frequency head energies shows that their thoughts are negative and that they have difficulties in their life.

The healthy body should emit the colour spectrum green to turquoise. Deviations from harmonious aura colours would point to weakness and suffering.

What can Aura Colours tell about us?

Aura	Colour	HeadEnergetic	Vital Energetic/Body
	White	Intuition	Heat, Stress, Overextension, Function weakness
	Magenta	Creativity	Heat, Nervousness, Acidity, Stress, Pressure
	Blue	Religiousness	Increased pressure, Gas, Acidity, Increased power
	Turquoise	Healing	Balance, Health, Sensitivity
	Green	Harmony	Homeostasis, Health, Vitality
	Yellow	Rationality	Slight weakening, Mucus, Indisposition
	Orange	Emotional	Chronic weakness, Heat, Mucus
	Red	Anger, Rage	Intense exhaustion, Weakness, Tiredness, Heat
	Grey	Depression	Extreme exhaustion, Burnout, Dryness

Red

Red can point to energetic weakness, exhaustion, tiredness and blockages. The organ zone feels empty and cool. The reason for this could be the long-lasting repression of emotions. The organ literally sees "red" because the rage cannot express itself through rational or practical methods. This weakened Red can physically express itself through the skin, which covers the internal organs and the body structure, and it conveys itself as heat symptoms like inflammation, reddening or pustules.

Orange

Orange vibrates below the green harmony line with marginally reduced life energy. The mental body, which swings in the colour yellow, represents our attitudes and wishes, and is intertwined with the red emotion colour of our passions and aggressions.